

Nissan Note , 2022

Nissan Note 1.2L - 03/2022

General Overview

The **Nissan Note 1.2L** offers the perfect balance of compact practicality, modern design, and advanced technology. Finished in **Black**, it delivers an elegant appearance combined with everyday efficiency, making it ideal for city driving and short commutes. With a **front-wheel drive (FWD)** setup and a smooth **automatic transmission**, it ensures easy handling and a comfortable ride for up to five passengers.

Performance and Efficiency

Powered by a **1.2-liter petrol engine** producing **120 horsepower**, the Nissan Note provides lively performance and excellent fuel economy. The powertrain delivers smooth and quiet operation, perfectly suited for both urban and suburban conditions. The lightweight body and efficient drivetrain contribute to responsive acceleration and low running costs, while the valid **MOT until 08/2027** ensures long-term peace of mind.

Interior and Comfort

Inside, the Note offers a refined and ergonomic cabin with features designed for convenience and safety. It includes **keyless start**, **folding mirrors**, **rear-view camera**, and **parking sensors** for easy maneuvering. The **360° surround-view camera** enhances visibility in tight spaces, while **lane assist** and **blind spot monitoring** systems help ensure safe driving in all traffic conditions.

Technology and Safety

Built with Nissan's focus on intelligent mobility, this model combines intuitive technology with advanced safety assistance. The system integration, along with precise handling and reliability, makes the **Nissan Note 1.2L** an excellent choice for those seeking a modern, efficient, and stylish compact hatchback perfectly adapted to everyday life.

Specifications:

ID: SZH-860


Final Price: 12600.00 EUR


Interior Color: Black

Number of Seats: 5


Steering Side: Right

Condition: New

 74346 km

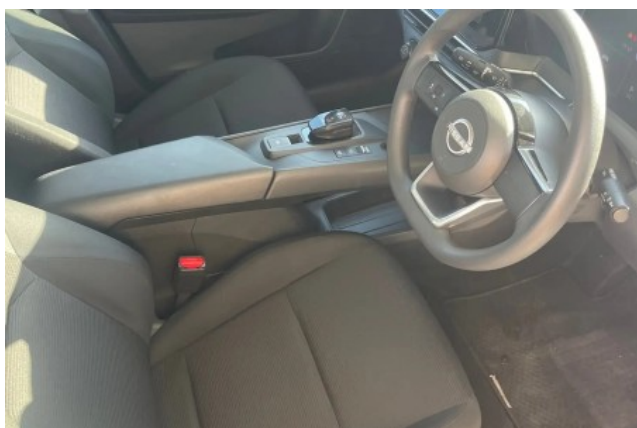
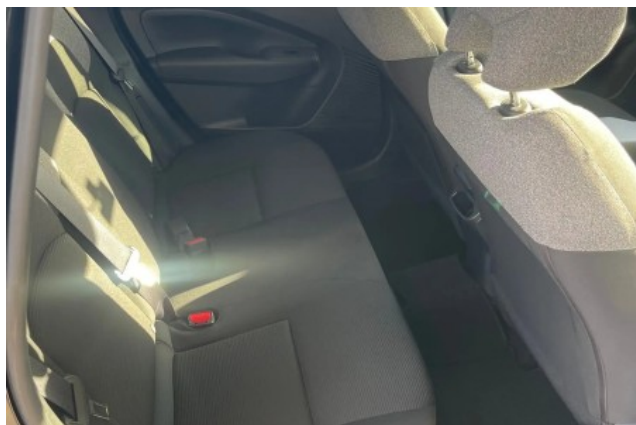
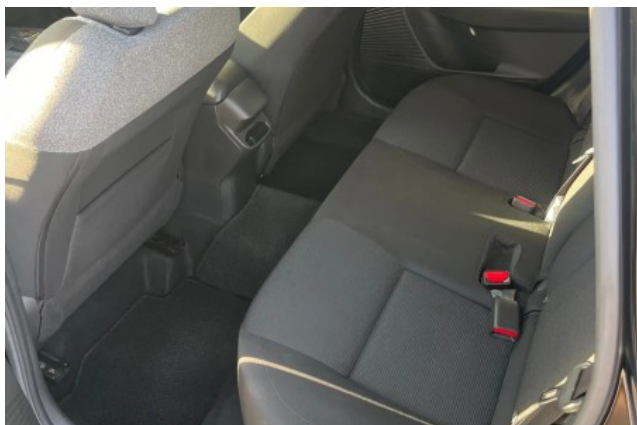
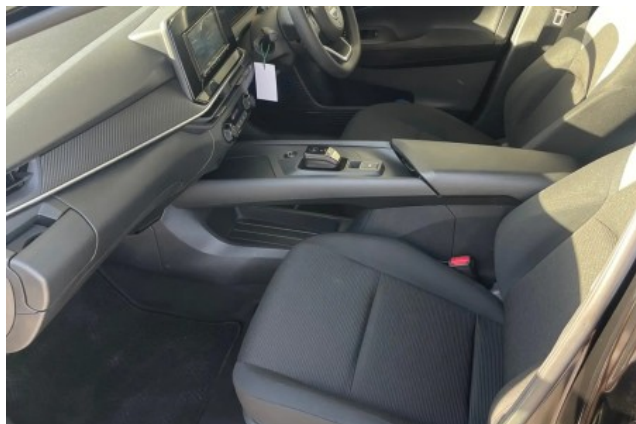
 1.2 l

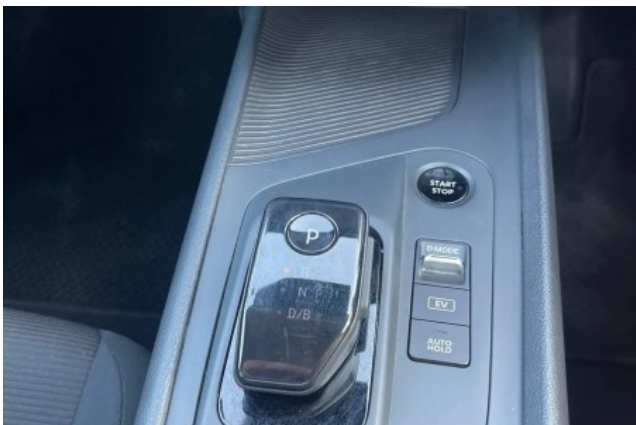
 2WD

 Petrol-Hybrid

 A/T

 Hatchback







km/h



328 km

74346 km